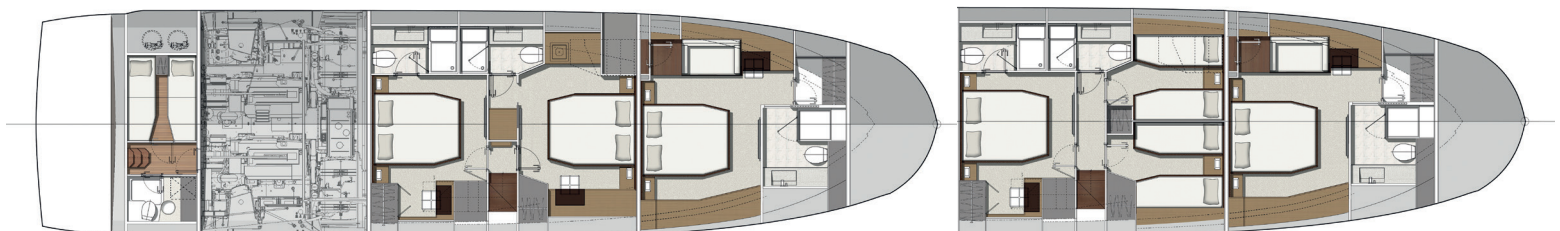
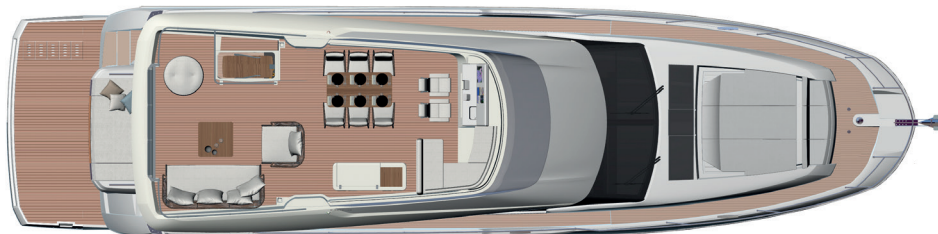
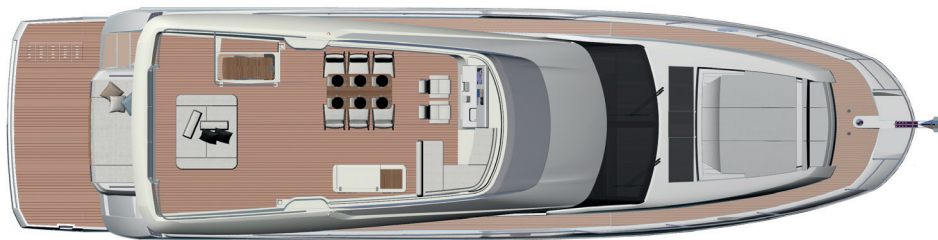


NEW | PRESTIGE 690



Overall length / Longueur hors tout	70'4"	21,45 m
Overall beam / Bau maxi	17'4"	5,30 m
Draft / Tirant d'eau	5'2"	1,58 m
Light displacement / Déplacement léger	72 799 Lbs	33 021 kg
Fuel capacity / Capacité carburant	911 US gal	3 450L
Water capacity / Capacité eau	201 US gal	760L
Hot water heater capacity / Capacité ballon d'eau chaude	32 US gal	120L
Accommodation / Couchages	8 + 2	
Category / Catégorie	B - 14 / C - 18	
Engine / Motorisation	Volvo 2 x IPS 1200 - D13 - 900 HP / CV Volvo 2 x IPS 1350 - D13 - 1000 HP / CV	

Connected boat technology. Equipped with **searapps**
CONNECT YOUR BOAT FREE YOUR MIND



Model available with 3 or 4 staterooms

ENGLISH / Standard equipment

Upholstery

- Interior upholstery Marlin Weiss
- Exterior upholstery Marble

Woodwork

- Interior woodwork Grey Oak

Deck

- Stainless steel stem head fitting with anchor roller
- Anchor stop
- Electric windlass with wired remote in anchor locker (24V)
- Windlass controls at lower helm and flybridge
- Anchor locker with dedicated space for fender storage
- Freshwater / saltwater anchor washdown
- Stainless steel cleats (12)
- Stainless steel handrails
- Stainless steel rubrail
- Foredeck sunpad area with cushions
- Foredeck seating area
- Folding canopy over sunpad
- Courtesy LED lights on sidedecks

Bathing platform

- Teak-laid bathing platform
- Hot and cold shower
- Stainless steel bathing ladder

Cockpit

- Sofa seating area
- Teak cockpit table with cup holders
- Electric sun awning
- Teak-laid cockpit flooring
- Stainless steel ladder to flybridge with teak steps
- Access hatch to the engine room with gas struts
- Transom safety gate
- Lateral door in coaming
- 2 marine stereo speakers
- Upholstered ceiling panels with integrated LED lighting
- Courtesy LED lighting
- Stern docking winch (port)
- Freshwater / saltwater deck washdown

Flybridge

- Helm console with engine throttles and maneuvering joystick, compass, (12V) plug, cup holders and storage compartment
- Helm seats in carbon fibre with armrests
- Stainless steel guard rails
- Perspex windscreen
- Exterior teck dining table and 6 dining chairs
- Island lounge with weighted backrests
- Seating area
- 2 marine stereo speakers
- Galley with corian furniture, wood doors, storage, grill & fridge
- Courtesy LED lighting
- Hardtop with electric sunroof

Interior helm station

- Helm console with engine throttles and maneuvering joystick, full engine instrumentation, compass and cup holders
- Wireless charging station on console
- Upholstered two-person helm bench Dolce Black
- Windscreen wipers with intermittent setting and washers
- USB plugs
- Front searchlight with remotes at each helm station
- Horn

Saloon

- U-shaped sofa seating
- Glass coffee table
- Storage cabinet / TV stand to starboard
- Sliding lateral door to starboard
- Side window pleated blinds
- Handrails with handstitched Foglizzo leather wrap
- Flooring through maindeck Fortezza
- Radio / CD / MP3 with Bluetooth in saloon
- 2 stereo speakers

Galley

- Stainless steel sink
- Mixing tap
- Combination microwave / grill
- 3-zone induction cooktop
- Extractor hood
- Corian worktop
- Fridge dual voltage (198L / 52 US Gal)
- Freezer dual voltage (57L / 15 US Gal)
- Waste bin
- Storage drawers and cupboards
- Wrap-around galley with cockpit bar
- Flooring through maindeck Fortezza

Dining

- Separate dining area with expanding glass-top table
- Flooring through maindeck Fortezza

Master Stateroom

- Independent access via private stairway
- Double bed (198 cm x 160 cm / 6'5" x 5'2")
- Innerspring mattress
- 2 reading lamps
- Bedside tables with storage
- Walk-in closet with shelving
- Storage cabinet
- Dressing table with mirror and stool
- Sofa
- Panoramic side windows with blinds and opening ports
- Overhead skylight with opening hatch with electric shade
- Removable carpet set
- Acoustic carpet underlay
- AC and USB plugs
- En suite bathroom
- Corian countertops and washbasin
- Soap dispenser & toothbrush holder
- Separate shower compartment
- Freshwater electric toilets
- Extractor fan
- AC plug
- Opening port

VIP Stateroom

- Double bed (197 cm x 147 cm / 6'5" x 4'9")
- Innerspring mattress
- 2 reading lamps
- Bedside tables
- Large closet with shelving
- Dressing table with mirror and stool
- Large side windows with blinds and opening ports
- Removable carpet set
- Acoustic carpet underlay
- AC and USB plugs
- En suite bathroom
- Corian countertops and washbasin
- Soap dispenser & toothbrush holder
- Separate shower compartment
- Freshwater electric toilets
- Extractor fan
- AC plug
- Opening port

Guest Stateroom

- 2 single berths to port convertible in double berth (195 cm x 69 cm / 6'4" x 2'3")
- 2 single berths to starboard convertible in double berth (201 cm x 70 cm / 6'7" x 2'3")
- Reading lamp
- Bedside table with storage
- Large closet with shelving
- Large side window with opening port
- Removable carpet set
- Acoustic carpet underlay
- AC and USB plugs
- Soap dispenser & toothbrush holder
- Separate shower compartment
- Freshwater electric toilets
- Extractor fan
- AC plug
- Opening port

Crew accommodation - Option

- 2 single berths (196 cm x 61 cm / 6'5" x 24')
- Storage closet
- Separate bathroom with toilet, washbasin and shower
- Additional holding tank (50L / 13 US Gal)
- Large window on the transom with blinds
- Crew door access from bathing platform
- Tactile graphic display for battery levels, AC sources, lighting and tank levels
- Direct access to engine room

Propulsion

- Joystick system for IPS
- IPS Nibral twin props
- Electronic power steering
- Electronic engine controls and throttles at each helm
- Single Lever, Cruise Control, Trim Computer and Low Speed functions
- Bow thruster dual prop (24V / 240 kgf / 529 lbs)
- Bronze seawater strainers
- Forced air ventilation system for engine room

Electrical System

- Battery bank (24V) - Engine (120 A/h)
- Battery bank (24V) - House (700 A/h)
- Battery bank crossover switch at helm
- Ship Control - Monitoring and control system connected to each MFD screen with dedicated 5" screen at entry
- Seanapps: connected box + mobile application for monitoring safety, navigation data, maintenance and comfort on board
- Remote battery switches
- Centralized distribution and breaker boxes for AC and DC systems
- AC shore power system
- Twin battery chargers (2 x 60A - 24V)
- Inverter (2000W)
- LED interior and exterior lighting with dimmer switches
- AC plugs in each cabin and in the galley and saloon

Fuel System

- 2 fuel tanks (aluminium) with interconnection valves (3450L / 911 US Gal)
- Fuel fills to port and starboard with crossover valve
- Remote shut-off valves in aft companionway

Water System

- Freshwater tanks (760L / 201 US Gal)
- Hot water heater (120L / 32 US Gal)
- Freshwater pressure pump
- Grey water sump pump with automatic discharge
- Dock water inlet with regulator
- Holding tank (290L / 77 US Gal)
- Holding tank vent filters
- Overboard discharge pumps for holding tanks with macerator function and deck pump-out
- Automatic bilge pumps with high water alarm (5)
- Manual bilge pump

Systems

- Generator 17,5KVA 220V / 50HZ
- Automatic fire extinguishers in engine room with control at each helm (Novac 1230)

Construction

- Infused GRP hull with longitudinal infused stringers
- Infused GRP deck with counter molding
- Isophthalic gelcoat
- Osmosis barrier
- Infused structural bulkheads

Additional Standard Equipment

- User and Owner's manuals
- Captain's briefcase with set of manuals
- Factory preparation and launching

North American specifications

- Chilled water air conditioning incorporating reverse cycle heating (111,000 / 114,000 BTU)
- 22,5kW Generator with underwater silent exhaust
- AGM Gel batteries bank upgrade
- Galvanic Isolator
- Cathodic bonding system with dedicated anodes